

# P410 Welding gauge, U.S. version



## Bourdon Tube Pressure Gauge



### Application:

- For Regulators and Equipments for welding and similar processes
- For dispensing systems (beer, etc.)

### Special Features

- Design ISO 5171
- Blow-out on the case back

### Technical Data

**Diameter:** 50, 63 mm

**Case/Bezel:** Steel, black or brass colored with blow-out on the back side

#### **Ranges:**

0...1 bar to 0...400 bar, for acetylen, oxygen and other gases

#### **Working pressure:**

Steady:  $\frac{3}{4}$  of full scale value

Fluctuating:  $\frac{2}{3}$  of full scale value

Short time: full scale value

#### **Operating Temperature:**

Ambient: TMIN -20 to TMAX + 60°C

Medium: TMAX: +60°C

#### **Temperature effect:**

Deviation when temperature of the Bourdon Tube deviates from +20C: max. +/- 0,4%/10K of the full scale value

#### **Design:**

ISO 5171

#### **Accuracy class:**

2,5 %

#### **Pressure element:**

≤ 60 bar: C-type

> 100 bar: helical type

#### **Pressure connection:**

Material: Cu-alloy

Lower (LM) and center back mount (CBM), NPT, BSPT

50 and 63 mm: G  $\frac{1}{4}$  B

#### **Movement:** Cu-alloy

**Dial:** White aluminium or plastic with black lettering

**Pointer:** Plastic, black

**Window:** Polycarbonate, twist-on

#### **Options:**

Other pressure connection

Case chrome plated

Case stainless steel

Socket: nickel plated

#### **Order information**

Model/Size/Scale range/Size of connection/Options

PA Instruments, s.r.o  
Vazska 1, 911 05 Trencin

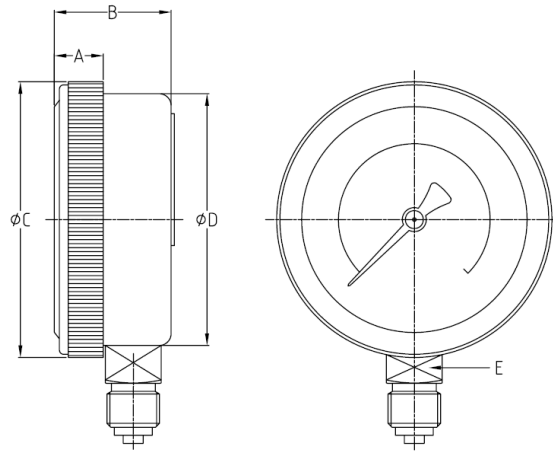
Tel: +421-32 652 42 10

<http://www.pai.sk> E-mail: sales@pai.sk

# P410 Welding gauge, U.S. version



## Bourdon Tube Pressure Gauge



NS	A	B	$\phi C$	$\phi D$	E	
40	/	/	/	/	/	
50	12.2	29.5	57	52	14	
63	12.3	29	69	61.5	14	
80	/	/	/	/	/	
100	/	/	/	/	/	
150	/	/	/	/	/	
160	/	/	/	/	/	